

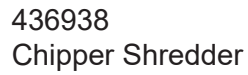
# Masport®

## CHIPPER SHREDDER

Body	Description	Chute	Chute	Engine	1st Made	S/N
436938	Chipper Shredder	736937	536940	B&S Intek 60	Dec 2012	7695170
936942	Two Pack-Includes 736937+536940					



Issue C.0  
Oct 2021 PB  
ECN # 04333  
IPL Ref # 736938



Issue C.0  
Oct 2021 PB  
ECN # 04333  
IPL Ref # 736938

2) BASE  
e are

This diagram shows the assembly of the machine's base. It features a main rectangular base plate with a central cutout. Two large, treaded wheels are shown being attached to the base. The wheels are mounted on axles that pass through the base plate. A motor assembly is shown mounted on top of the base plate, with a pulley system visible. The diagram includes various fasteners like bolts, nuts, and washers, and is labeled with '2)' and 'BASE'.

g some of  
nal parts

This diagram illustrates the assembly of a vehicle chassis. The main components shown are a motor unit with a gear assembly, a central chassis frame, two wheels with treaded tires, and various mounting brackets and screws. The motor unit is positioned at the top left, connected to a gear assembly that meshes with a larger gear on the chassis. The chassis frame is a rectangular box with a flat top and a curved front. Two wheels are attached to the sides of the chassis. Various brackets and screws are shown being attached to the chassis, including a large circular bracket on the right side and several smaller brackets and screws on the top and front. The diagram is a line drawing with some shading to indicate depth and perspective.

Page 2

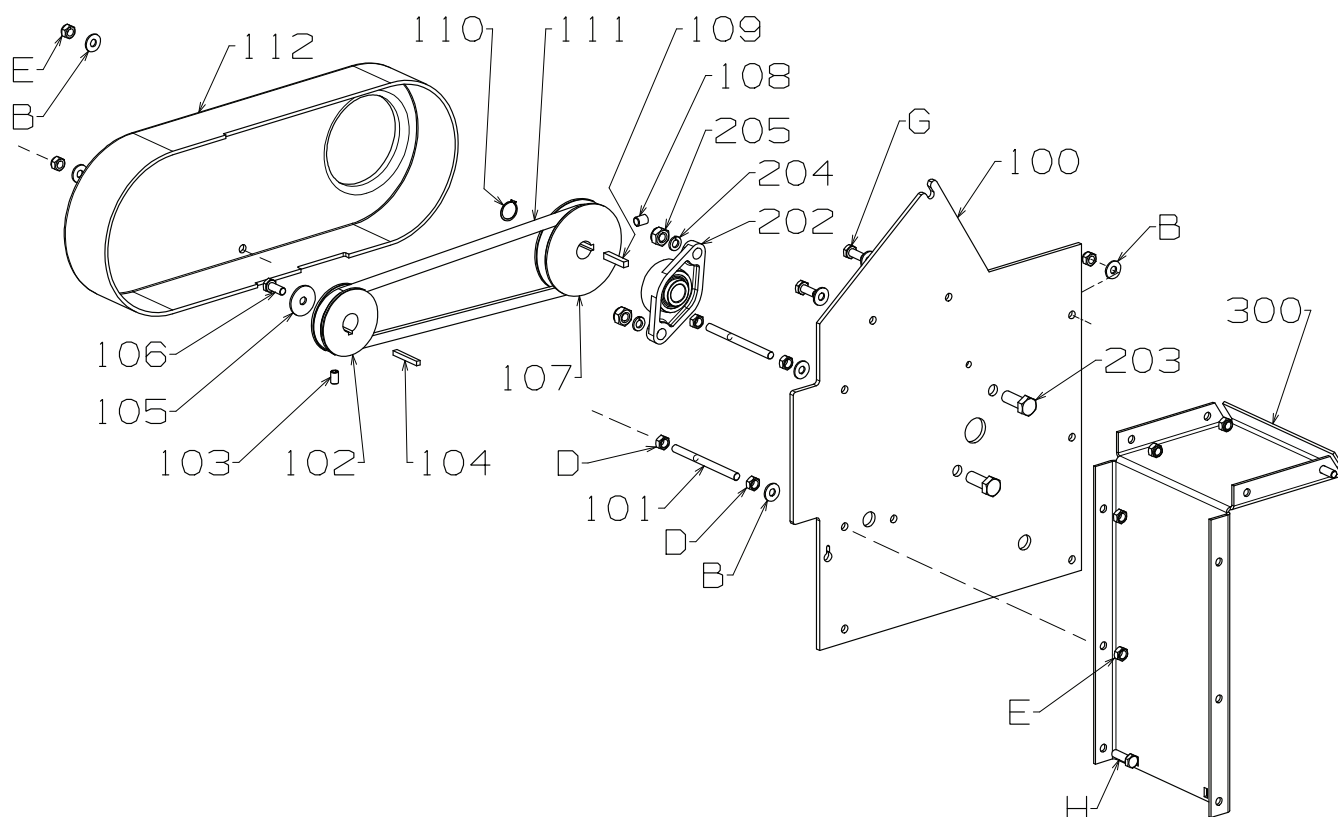


436938  
Chipper Shredder

# Masport®

Issue C.0  
Oct 2021 PB  
ECN # 04333  
IPL Ref # 736938

## LH Side - Exploded View



Item	Part No	Description	Qty	Item	Part No	Description	Qty
100	936003	Plate-Side, LH Green	1	B	501606	Washer, Flat 8 x 19 x 1.6	7
101	536024	Stud- M8 x 100, Belt Cover	2	D	501602	Nut, M8 Hex	4
102	536011	Pulley- Engine, 19B x 73D x 34H	1	E	501793	Nut, M8 Hex Nyloc x 8mm thick	7
103	503970	Screw, Grub UNC 5/16" x .5	1	G	501597	Screw, Set M8 x 20 Hex	2
104	536012	Key-Engine 3/16" x 38mm	1	H	501598	Screw, Set M8 x 25	1
105	572199	Washer, Flat 8 x 32 x 2.0	1				
106	501116	Screw, Set NF 5/16 x .75 Hex	1				
107	536010	Pulley- Rotor, 3.5"	1				
108	503734	Screw, Grub UNC 3/8" x .5	1				
109	536064	Key- Engine 1/4" SQ x 32	1				
110	503680	Circlip, 19 External	1				
111	536342	Belt- V, A889	1				
112	536015	Cover-Belt	1				
202	503751	Bearing- Complete (Includes Bearing, SKF YAR 204-012-2RF)	1				
203	503728	Bolt, Hex M12 x 30 Special	2				
204	501759	Washer, Spring 12mm	2				
205	501756	Nut, M12 Hex	2				

When ordering spares: PLEASE QUOTE PART NUMBER & DESCRIPTION, NOT illustrated number. Item Qty = 1 per part unless stated differently.

**BOLD TEXT** = Assemblies. Descriptions starting with \* = items included in the assemblies & may not be available as a spares item.

Determine the left or right hand sides by standing in the operating position (standing at the handle).

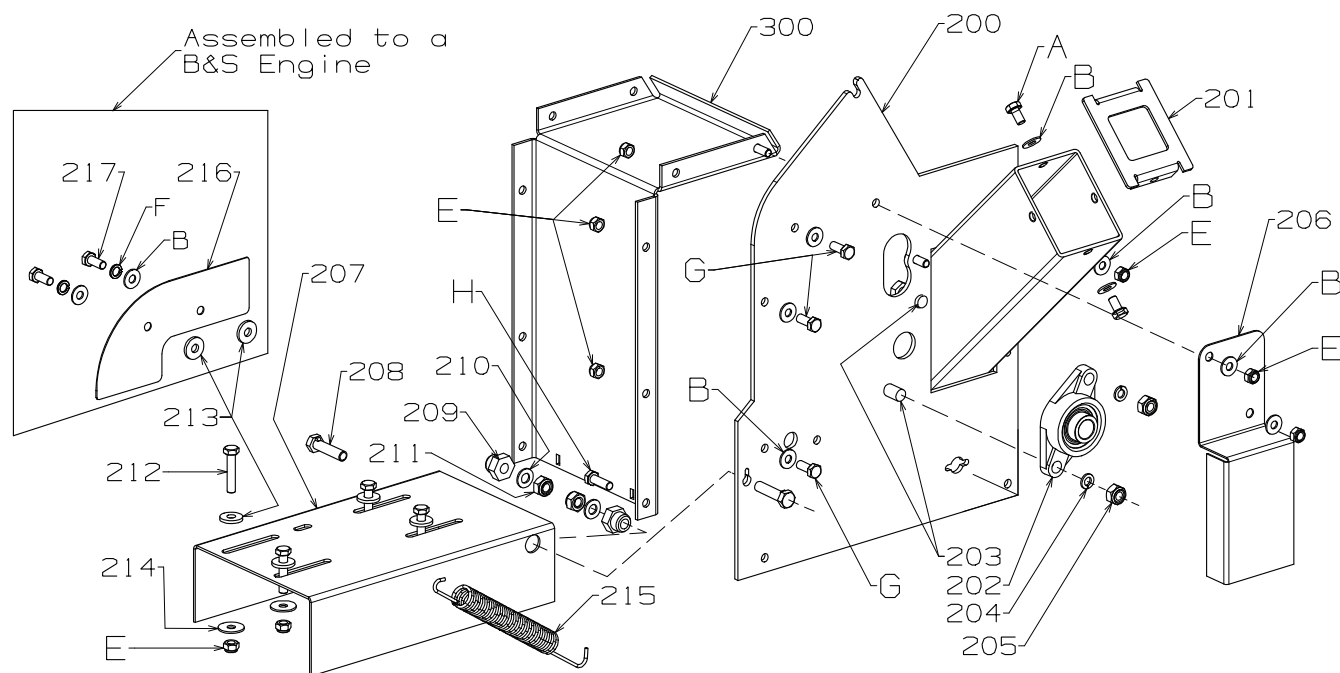


436938  
Chipper Shredder

# Masport®

Issue C.0  
Oct 2021 PB  
ECN # 04333  
IPL Ref # 736938

## RH Side - Exploded View



Item	Part No	Description	Qty	Item	Part No	Description	Qty
200	936378	Plate Assy- Side, RH Green C/S	1	A	501571	Screw, Set M8 x 16 8.8 Hex Black	2
201	536375	Restrictor- Infeed Tube Black	1	B	501606	Washer, Flat 8 x 19 x 1.6	10
202	503751	Bearing- Complete (Includes Bearing, SKF YAR 204-012-2RF)	1	E	501793	Nut, M8 Nyloc x 8mm thick	10
203	503728	Bolt, Hex M12 x 30 Special	2	F	503747	Washer Spg, 8	2
204	501759	Washer, Spring 12mm	2	G	501597	Screw, Set M8 x 20 Hex	3
205	501756	Nut, M12 Hex	2	H	501598	Screw, Set M8 x 25	1
206	936117	Plate- Cover, Maintenance/Bearing	1				
207	936034	Plate- Mount, Engine Green	1				
208	503731	Bolt, Hex Special M10 x 40	2				
209	936035	Bush- Pivot, Engine	2				
210	501704	Washer, Flat 10 x 19 x 1.6	2				
211	501680	Nut, M10 Hex Nyloc x 10mm thick	2				
212	501843	Screw, Set M8 x 40 Hex	4				
213	503872	Washer, Flat 8 x 20 x 3.0	6				
214	503746	Washer, Flat 8 x 25 x 1.6	4				
215	536008	Spring- Belt Tensioner	1				
216	536324	Plate- Safety, Engine Black	1				
217	501116	Screw, Set NF 5/16 x .75 Hex	2				

When ordering spares: PLEASE QUOTE PART NUMBER & DESCRIPTION, NOT illustrated number. Item Qty = 1 per part unless stated differently.  
**BOLD TEXT** = Assemblies. Descriptions starting with \* = items included in the assemblies & may not be available as a spares item.  
 Determine the left or right hand sides by standing in the operating position (standing at the handle).

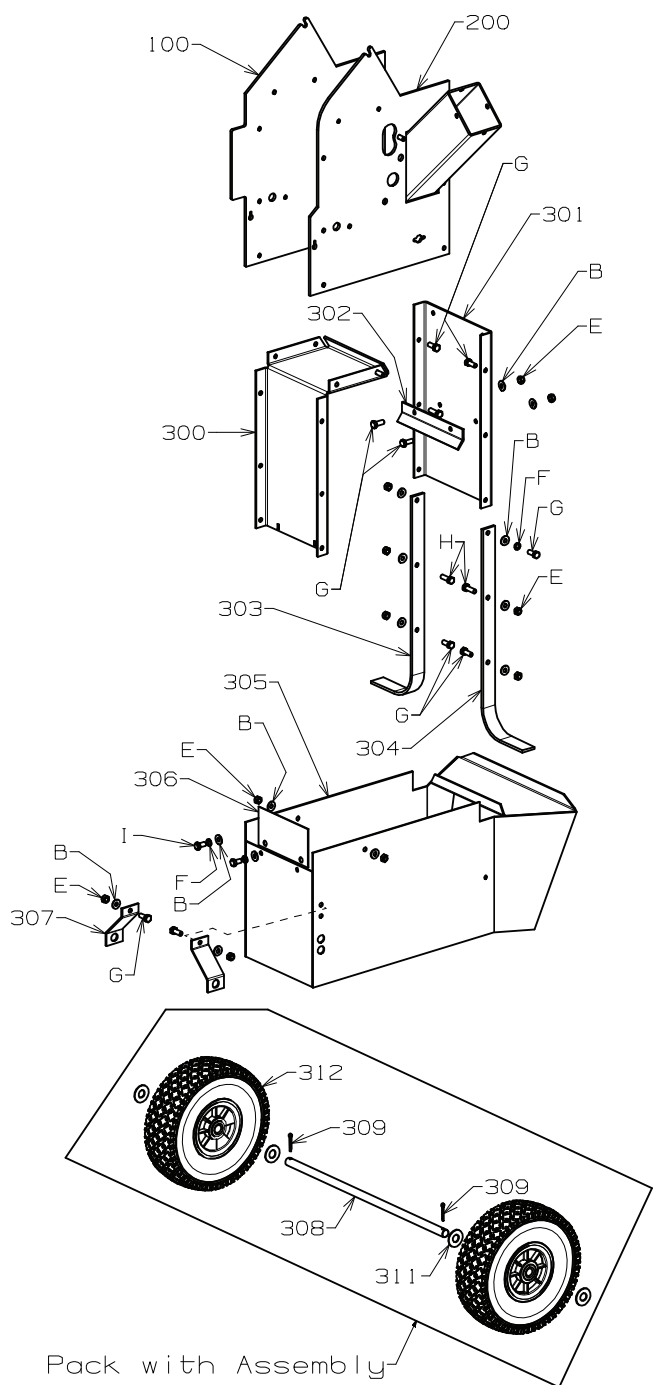


436938  
Chipper Shredder

# Masport®

Issue C.0  
Oct 2021 PB  
ECN # 04333  
IPL Ref # 736938

## Body - Exploded View



Item	Part No	Description	Qty
300	936556	Plate Assy- Rear, Green	1
301	936018	Plate- Front, Green	1
302	536021	Plate-Stop, Shredder	1
303	936078	Leg- Front, LH Euro Green	1
304	936079	Leg- Front, RH Euro Green	1
305	936073	Chute- Discharge, Euro Green	1
306	936554	Plate-Safety, Discharge Green	1
307	936080	Support-Axle, Euro Green	2
308	536595	Axle- Long, Euro	1
309	500029	Pin, Cotter 4.0 dia x 25	2
311	502017	Washer, Flat 16 x 32 x 1.6	4
312	549984	Wheel Assy-257mm PP+PU Foam	2
B	501606	Washer, Flat 8 x 19 x 1.6	14
E	501793	Nut, M8 Nyloc x 8mm thick	11
F	503747	Washer Spg, 8	3
G	501597	Screw, Set M8 x 20 Hex	10
H	501598	Screw, Set M8 x 25	2
I	501571	Screw, Set M8 x 16 Hex	2

### Note

The above wheels will not back fit to older models.  
If this is a requirement, order KIT 736596  
(Includes items 2 x 309, 311, 312 & 1 x 308)

### Note

The replacement of the Pneumatic Wheels  
started from  
436938 Serial Number 8575390





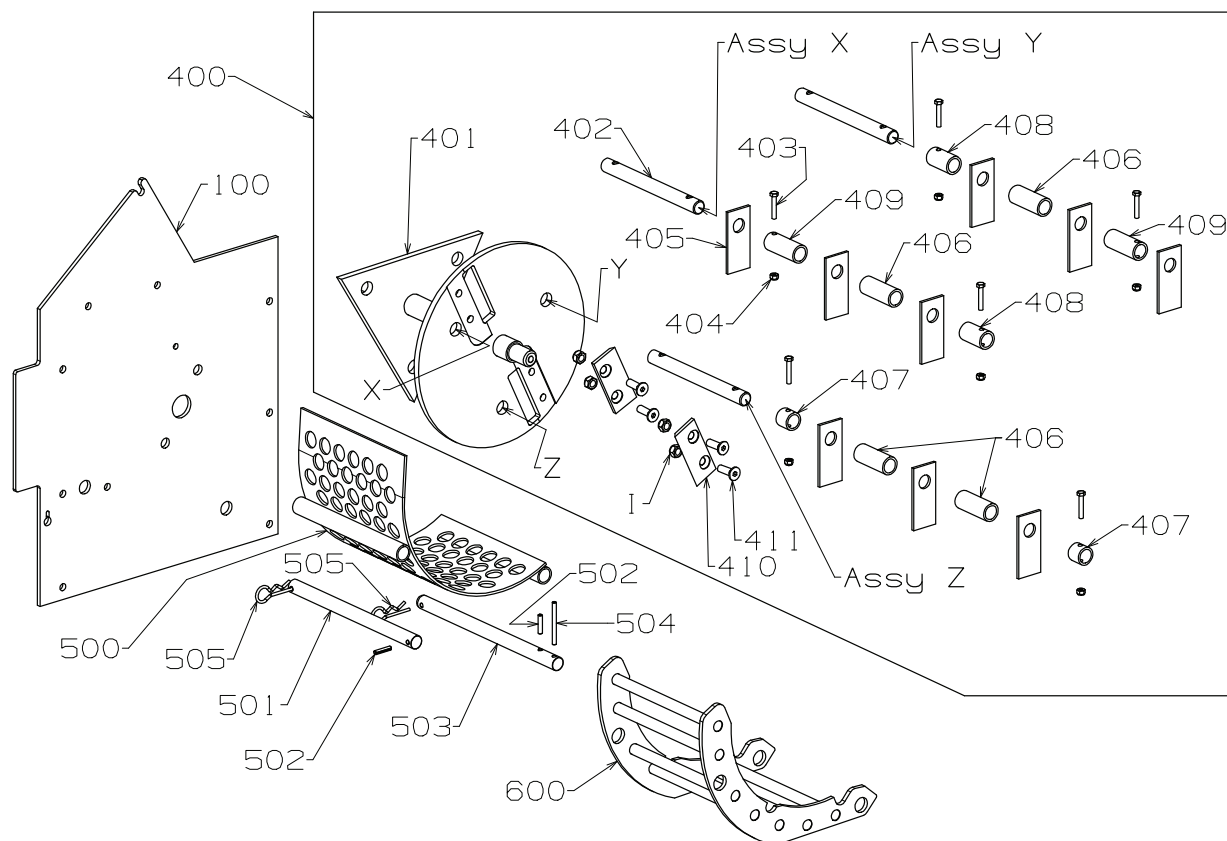
436938  
Chipper Shredder

# Masport®

Issue C.0  
Oct 2021 PB  
ECN # 04333  
IPL Ref # 736938

## Rotor - Exploded View

After assembling the flail rods, it is important that the X, Y & Z positions are observed



Item	Part No	Description	Qty	Optional Accessory if not included with this assembly	
400	936196	<b>Cutter Assy- B/Drive, 6.5XL 2Bl</b>	1	600	929304 Bar Grate Screen Assy 1
401	536195	*Rotor Assy- B/Drive, Twin Shred	1		
402	536029	*Rod Assy- Shredder	3		
403	503678	*Bolt, M5 x 28 8.8 HEX	6		
404	503511	*Nut, Nyloc M5	6		
405	536030	*Blade- Flail, Shredder	9		
406	536045	*Spacer-Blade, 21.3 x 51- Plain	4		
407	536043	*Spacer-Blade, 21.3 x 18- Drilled	2		
408	536042	*Spacer-Blade, 21.3 x 36- Drilled	2		
409	536044	*Spacer- Blade, 21.3 x 51 Drilled	2		
410	536027	*Blade-Chipper - 75mm	2		
411	599501	*Screw, CSK M8 x 25	4		
500	536371	Plate Assy, Shredder	1		
501	936017	Rod- Shredder Plate, Rear	1		
502	503369	Pin, Tension 5.0 x 22	2		
503	936016	Rod-Shredder Plate, Front	1		
504	031290	Pin, Tension 5.0 x 50	1		
505	536028	Clip-Hairpin, 3mm	2		
E	501793	Nut, M8 Hex Nyloc x 8mm thick	4		

When ordering spares: PLEASE QUOTE PART NUMBER & DESCRIPTION, NOT illustrated number. Item Qty = 1 per part unless stated differently.

**BOLD TEXT** = Assemblies. Descriptions starting with \* = items included in the assemblies & may not be available as a spares item.

Determine the left or right hand sides by standing in the operating position (standing at the handle).

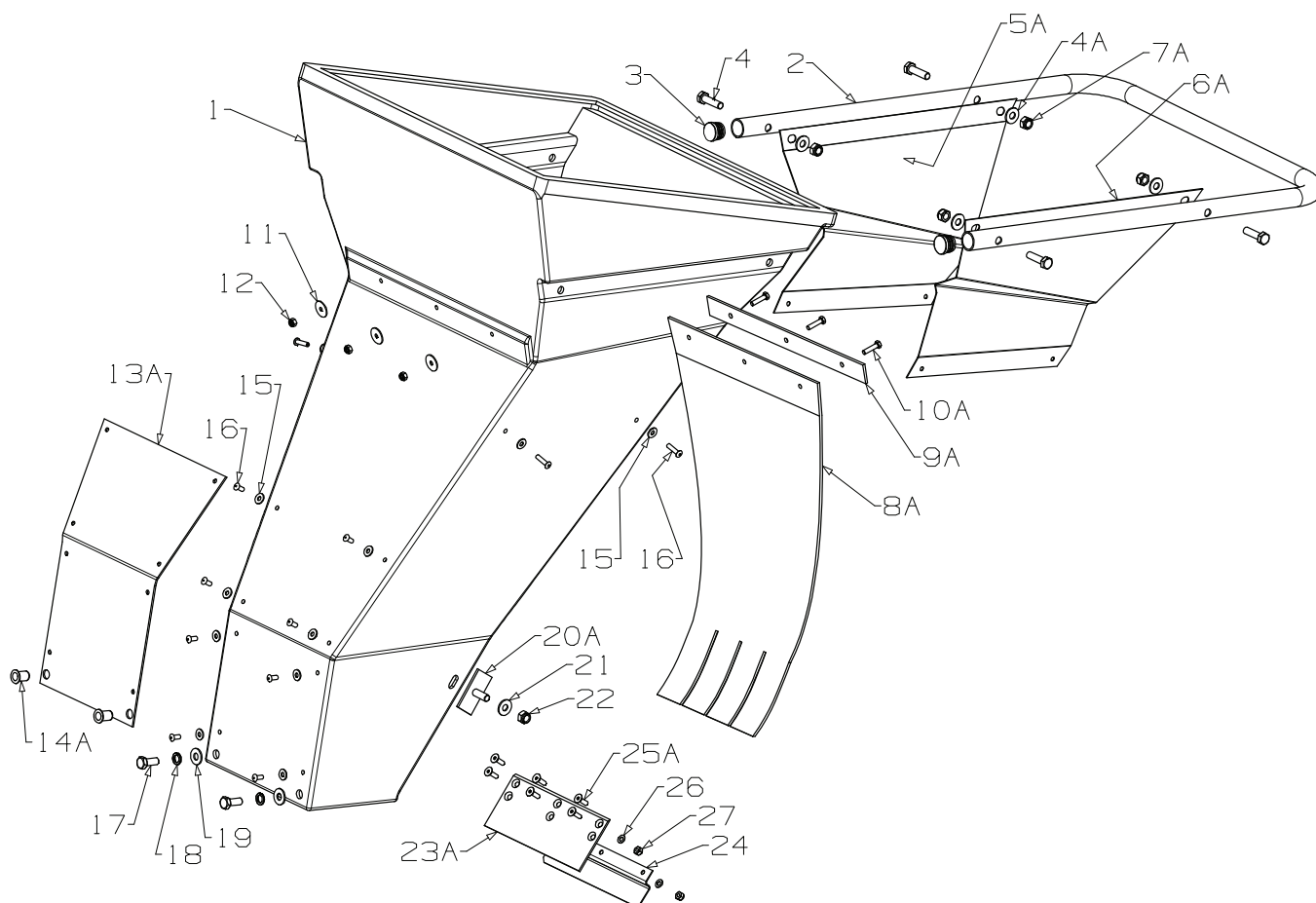


436938  
Chipper Shredder

# Masport®

Issue C.0  
Oct 2021 PB  
ECN # 04333  
IPL Ref # 736938

## 536940 - Chute Assembly Shredder Masport



Items with # A are assembled inside the Chute

Fastener Pack Included Containing Items:  
17, 18, 19, 20A, 21 & 22

Item	Part No	Description	Qty	Item	Part No	Description	Qty
1	536058	Chute- Shredder, Euro Black	1	15	500848	Washer, Flt 3/16 x .5 x .039	12
2	936285	Handle- Chute, Blk	1	16	503660	Rivet-Pop, 4.8 Dia x 9.0	12
3	503319	Plug- 22mm, Plastic	2	17	501598	Screw, Set M8 x 25 Hex	2
4	501716	Screw, Set M8 x 35 Hex	4	18	503747	Washer, Spg 8	2
4 A	501606	Washer, Flt 8 x 19 x 1.6	4	19	501606	Washer, Flt 8 x 19 x 1.6	2
5 A	536386	Plate Restrictor Infeed RH	1	20 A	536065	Retainer-Chute	2
6 A	536387	Plate Restrictor Infeed LH	1	21	501606	Washer, Flt 8 x 19 x 1.6	2
7 A	501793	Nut, M8 Hex Nyloc	4	22	501793	Nut, M8 Hex Nyloc	2
8 A	536376	Flap- Chute, Rubber	1	23 A	536315	Plate- Protector, Back	1
9 A	536377	Plate- Kickback, Black	1	24	536316	Bracket- Protector, Back	1
10 A	503727	Screw, Set M5 x 20 Hex	3	25 A	503983	Screw, CSK M5 x 16 Allen	6
11	503512	Washer, Flat 5 x 22 x 1.5	3	26	501330	Washer, Flt 5 x 10 x 1.0	6
12	503511	Nut, M5 Hex Nyloc	3	27	503511	Nut, M5 Hex Nyloc	6
13 A	536061	Plate-Protector, Front	1				
14 A	503682	Nut, M8 Nutsert	2				

When ordering spares: PLEASE QUOTE PART NUMBER & DESCRIPTION, NOT illustrated number. Item Qty = 1 per part unless stated differently.

**BOLD TEXT** = Assemblies. Descriptions starting with \* = items included in the assemblies & may not be available as a spares item.

Determine the left or right hand sides by standing in the operating position (standing at the handle).

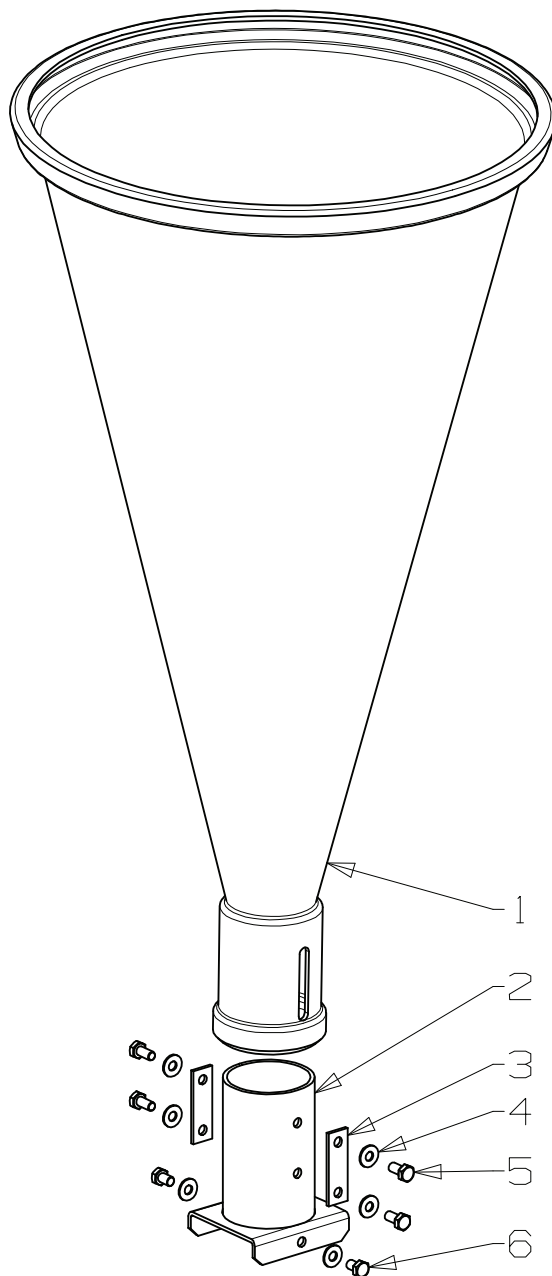


436938  
Chipper Shredder

# Masport®

Issue C.0  
Oct 2021 PB  
ECN # 04333  
IPL Ref # 736938

## Chute (Trumpet) Assembly



Item	Part No	Description	Qty
1	536095	Chute-Chipper, Europe	1
2	536381	Adaptor Assy Trumpet Chute	1
3	536385	Plate Chute Adaptor	2
4	501606	Washer, Flat 8 x 19 x 1.6	6
5	502106	Screw, Set M8 x 16	4
6	501863	Screw, Set M8 x 12	2





436938  
Chipper Shredder

# Masport®

Issue C.0  
Oct 2021 PB  
ECN # 04333  
IPL Ref # 736938

## 536940 - Chute Assembly Decal Map

700	536126	Decal, Danger Chipper Inlet	1
701	536127	Decal, Danger, Discharge Opening	1
702	536203	Decal, Twin Blades	1
703	536389	Decal, Chute-Safety	1
704	536553	Decal, Caution, Guard	1
705	536390	Decal, Noise, Chipper	1
706	536123	Decal, Danger Chute	1
707	536180	Decal, Chute MASPORT	1



Not Illustrated

536388	Owners Manual- EURO	1
536405	Certificate of Conformity	1